

Issued 1957-01  
Cancelled 2007-08

Superseding J731 FEB1985

### Component Nomenclature—Loader

- 1. Scope**—This standard includes names of major components and parts peculiar to this type machine.

The illustrations are descriptive of the principles and are not intended to include all existing commercial machines.

[Refer to SAE J1057 JUL73—Identification Terminology of Earthmoving Machines for machine type.]

- 1.1 Rationale**—Superseded by ISO 7131.

**2. References**

- 2.1 Applicable Publications**—The following publication forms a part of this specification to the extent specified herein. Unless otherwise indicated, the latest version of SAE publications shall apply.

- 2.1.1 SAE PUBLICATION**—Available from SAE, 400 Commonwealth Drive, Warrendale, PA 15096-0001, Tel: 877-606-7323 (inside USA and Canada) or 724-776-4970 (outside USA), [www.sae.org](http://www.sae.org).

SAE J1057 JUL73—Identification Terminology of Earthmoving Machines

SAE Technical Standards Board Rules provide that: "This report is published by SAE to advance the state of technical and engineering sciences. The use of this report is entirely voluntary, and its applicability and suitability for any particular use, including any patent infringement arising therefrom, is the sole responsibility of the user."

SAE reviews each technical report at least every five years at which time it may be reaffirmed, revised, or cancelled. SAE invites your written comments and suggestions.

Copyright © 2007 SAE International

All rights reserved. No part of this publication may be reproduced, stored in a retrieval system or transmitted, in any form or by any means, electronic, mechanical, photocopying, recording, or otherwise, without the prior written permission of SAE.

TO PLACE A DOCUMENT ORDER:

Tel: 877-606-7323 (inside USA and Canada)  
Tel: 724-776-4970 (outside USA)  
Fax: 724-776-0790  
Email: [CustomerService@sae.org](mailto:CustomerService@sae.org)  
<http://www.sae.org>

SAE WEB ADDRESS:

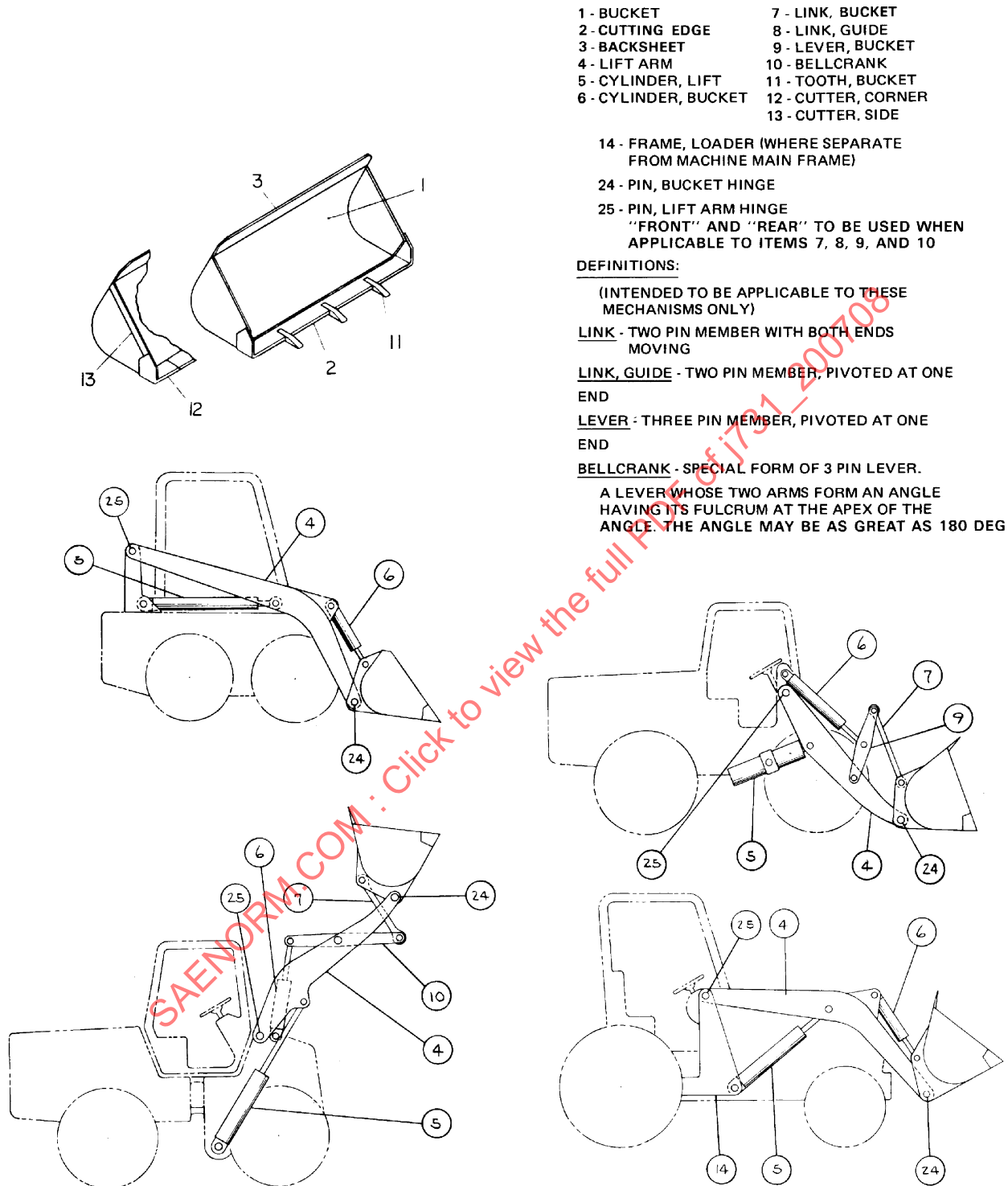


FIGURE 1—