

REV.  
B

AS21909

FEDERAL SUPPLY CLASS  
4730

# RATIONALE

THIS DOCUMENT HAS BEEN REAFFIRMED TO COMPLY WITH THE SAE 5-YEAR REVIEW POLICY.

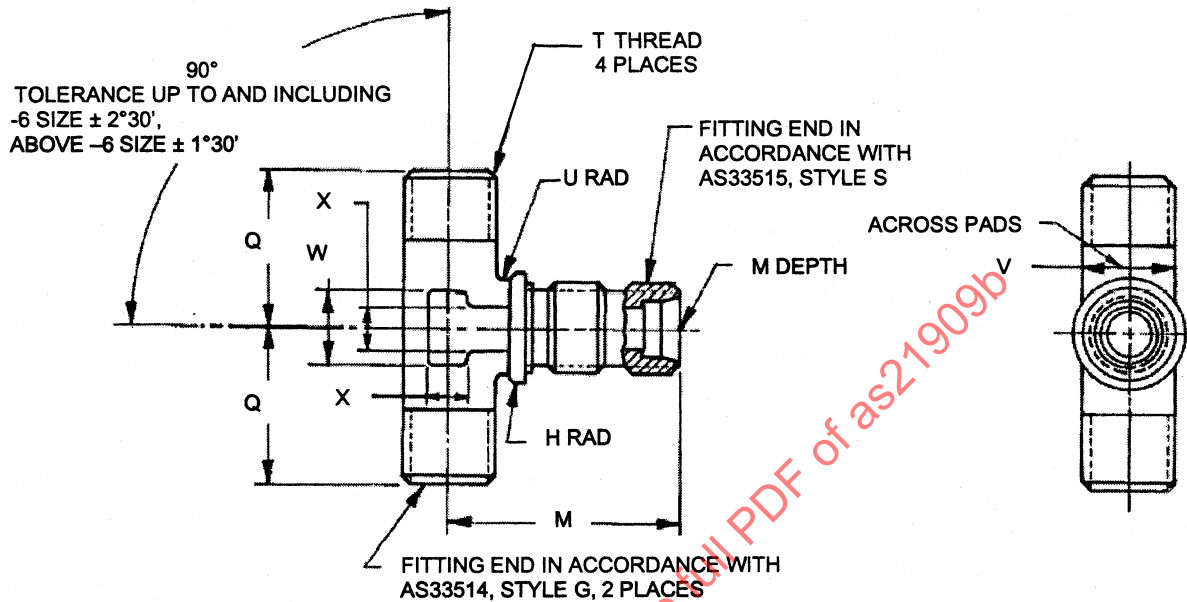


FIGURE 1 - TEE, BULKHEAD AND UNIVERSAL, FLARELESS TUBE

CUSTODIAN: SAE G-3/G-3B

PROCUREMENT SPECIFICATION: AS18280


**SAE Aerospace**  
An SAE International Group


## AEROSPACE STANDARD

(R)  
TEE, BULKHEAD AND UNIVERSAL, FLARELESS TUBE

**AS21909**  
SHEET 1 OF 4

**REV.  
B**

REV. B	TABLE 1A - DIMENSIONS H-U						
	DASH NO.	NOMINAL TUBE SIZE	T THREAD AS8879	H RAD	M +.047 -.000	Q +.047 -.000	U RAD
AS21909	-2	.125	.3125-24 UNJF-3A	.062	1.312	.781	.062
	-3	.188	.3750-24 UNJF-3A	.062	1.390	.906	.062
	-4	.250	.4375-20 UNJF-3A	.062	1.500	.937	.062
	-5	.313	.5000-20 UNJF-3A	.094	1.531	1.031	.062
	-6	.375	.5625-18 UNJF-3A	.094	1.687	1.062	.094
	-8	.500	.7500-16 UNJF-3A	.094	1.969	1.312	.094
	-10	.625	.8750-14 UNJF-3A	.094	2.250	1.500	.125
	-12	.750	1.0625-12 UNJ-3A	.094	2.469	1.625	.125
	-16	1.000	1.3125-12 UNJ-3A	.125	2.594	1.719	.125
	-20	1.250	1.6250-12 UNJ-3A	.125	2.875	2.000	.187
	-24	1.500	1.8750-12 UNJ-3A	.125	3.156	2.187	.187
	-32	2.000	2.5000-12 UNJ-3A	.125	3.750	2.375	.187
	TABLE 1B - DIMENSIONS V-X						
	DASH NO.	V	W APPROX (HEX)	X APPROX (HEX)	WEIGHT, LB/EA. APPROX, REF.		
					STEEL	AL ALLOY	TI ALLOY
-2	.312	.312	.187	.062	.022	.035	
-3	.375	.312	.250	.078	.028	.045	
-4	.437	.375	.250	.094	.033	.054	
-5	.500	.500	.312	.141	.048	.081	
-6	.562	.500	.312	.165	.058	.089	
-8	.750	.625	.437	.304	.108	.175	
-10	.875	.750	.437	.450	.166	.259	
-12	1.062	.825	.500	.700	.255	.403	
-16	1.312	1.062	.625	.965	.342	.556	
-20	1.625	1.250	.750	1.720	.620	.992	
-24	1.875	1.437	.875	2.220	.815	1.280	
-32	2.562	1.937	1.188				
NOTES:							
1. MATERIAL:							
SEE PROCUREMENT SPECIFICATION.							
ALLOY STEEL							
ALUMINUM ALLOY							
CORROSION RESISTANT STEEL							
TITANIUM ALLOY							
2. FINISH: SEE PROCUREMENT SPECIFICATION							
3. BREAK EDGES .003 TO .015 UNLESS OTHERWISE SPECIFIED.							
4. DIMENSIONS ARE IN INCHES. UNLESS OTHERWISE SPECIFIED, TOLERANCES: DECIMALS ±.016, ANGLES ±0°30'.							
 An SAE International Group		AEROSPACE STANDARD			AS21909 SHEET 2 OF 4		REV. B
		(R) TEE, BULKHEAD AND UNIVERSAL, FLARELESS TUBE					

REV. B	5. PART NUMBERS:				
	DASH “-” IN PART NUMBER FOR 4130 ALLOY STEEL IS CANCELLED AND REPLACED, SEE 7 /A/ ADD “V(SIZE)P” IN PLACE OF DASH FOR CORROSION RESISTANT STEEL (15-5PH), CADMIUM PLATED ADD “V” IN PLACE OF DASH FOR CORROSION RESISTANT STEEL (15-5PH), NOT CADMIUM PLATED ADD “D” IN PLACE OF DASH FOR ALUMINUM ALLOY (2014): CANCELLED AND REPLACED, SEE 7 /C/ ADD “W” IN PLACE OF DASH FOR ALUMINUM ALLOY (7075) ADD “J” IN PLACE OF DASH FOR CORROSION RESISTANT STEEL (TYPE 304) ADD “K” IN PLACE OF DASH FOR CORROSION RESISTANT STEEL (TYPE 316) ADD “R” AFTER DASH NUMBER FOR CORROSION RESISTANT STEEL (TYPE 321) ADD “S” AFTER DASH NUMBER FOR CORROSION RESISTANT STEEL (TYPE 347): CANCELLED, SEE 7 /D/ ADD “T” AFTER DASH NUMBER FOR TITANIUM ALLOY (6AL-4V)  EXAMPLES OF PART NUMBERS:  MS21909-4     TEE, .250 TUBING, 4130 ALLOY STEEL IS CANCELLED AND REPLACED, SEE 7 /A/ MS21909V4P   TEE, .250 TUBING, CORROSION RESISTANT STEEL (15-5PH), CADMIUM PLATED MS21909V4    TEE, .250 TUBING, CORROSION RESISTANT STEEL (15-5PH), NOT CADMIUM PLATED MS21909D4    TEE, .250 TUBING, ALUMINUM ALLOY (2014) IS CANCELLED AND REPLACED, SEE 7 /C/ MS21909W4    TEE, .250 TUBING, ALUMINUM ALLOY (7075) MS21909J4    TEE, .250 TUBING, CORROSION RESISTANT STEEL (TYPE 304) MS21909K4    TEE, .250 TUBING, CORROSION RESISTANT STEEL (TYPE 316) MS21909-4R   TEE, .250 TUBING, CORROSION RESISTANT STEEL (TYPE 321) MS21909-4S   TEE, .250 TUBING, CORROSION RESISTANT STEEL (TYPE 347) IS CANCELLED, SEE 7 /D/ MS21909-4T   TEE, .250 TUBING, TITANIUM ALLOY (6AL-4V)  6. TITANIUM NOT RECOMMENDED FOR USE IN OXYGEN SYSTEMS. 7. SEE TABLE 2 FOR CANCELLED AND SUPERSEDED DOCUMENT AND PART NUMBERS.				
AS21909	TABLE 2 - CANCELLED AND SUPERSEDED DOCUMENT AND PART NUMBERS				
	CANCELLED DOCUMENT NUMBER	PART NUMBERS	SUPERSESSON NOTES	SUPERSEDING DOCUMENT NUMBER	SUPERSEDING PART NUMBERS
	MS21909	MS21909-(2 THRU 32)	/A/	AS21909	MS21909V(2 THRU 32)P
	MS21909	MS21909C(2 THRU 32)	/B/	AS21909	MS21909J(2 THRU 32), MS21909K(2 THRU 32), OR MS21909-(2 THRU 32)R
	MS21909	MS21909D(2 THRU 32)	/C/	AS21909	MS21909W(2 THRU 32)
	MS21909	MS21909W(2 THRU 32)	NONE	AS21909	MS21909W(2 THRU 32)
	MS21909	MS21909J(2 THRU 32)	NONE	AS21909	MS21909J(2 THRU 32)
	MS21909	MS21909K(2 THRU 32)	NONE	AS21909	MS21909K(2 THRU 32)
	MS21909	MS21909-(2 THRU 32)R	NONE	AS21909	MS21909-(2 THRU 32)R
	MS21909	MS21909-(2 THRU 32)S	/D/	AS21909	MS21909-(2 THRU 32)R
	MS21909	MS21909-(2 THRU 32)T	NONE	AS21909	MS21909-(2 THRU 32)T
	/A/ PARTS CODED “-” FOR 4130 ALLOY STEEL ARE NOT TO BE MANUFACTURED. PARTS CODED “V(SIZE)P” FOR CORROSION RESISTANT STEEL (15-5PH) WITH CADMIUM PLATE SHALL BE FURNISHED IN LIEU OF “-” CODED (4130) PARTS. PARTS CODED “-” FOR 4130 ALLOY STEEL MAY BE PROCURED UNTIL 12-31-06.				
	/B/ PARTS CODED “C” FOR CORROSION RESISTANT STEEL (TYPE 303) ARE NOT TO BE MANUFACTURED. PARTS CODED “J”, “K” OR “R” FOR CORROSION RESISTANT STEEL (TYPES 304, 316, OR 321, RESPECTIVELY) SHALL BE FURNISHED IN LIEU OF “C” CODED PARTS AT SUPPLIERS OPTION.				
	/C/ PARTS CODED “D” FOR ALUMINUM ALLOY 2014 ARE NOT TO BE MANUFACTURED. PARTS CODED “W” FOR ALUMINUM ALLOY 7075 SHALL BE FURNISHED IN LIEU OF 2014 (D CODE) PARTS. PARTS CODED “D” FOR ALUMINUM ALLOY 2014 MAY BE PROCURED UNTIL 12-31-06.				
	/D/ PARTS CODED “S” FOR CORROSION RESISTANT STEEL (TYPE 347) ARE NOT TO BE MANUFACTURED. PARTS CODED “S” MAY BE USED UNTIL EXISTING STOCK IS DEPLETED. PARTS CODED “R” FOR CORROSION RESISTANT STEEL (TYPE 321) SHALL BE FURNISHED IN LIEU OF “S” CODED PARTS.				
 An SAE International Group		AEROSPACE STANDARD			AS21909 SHEET 3 OF 4
		(R) TEE, BULKHEAD AND UNIVERSAL, FLARELESS TUBE			
					REV. B